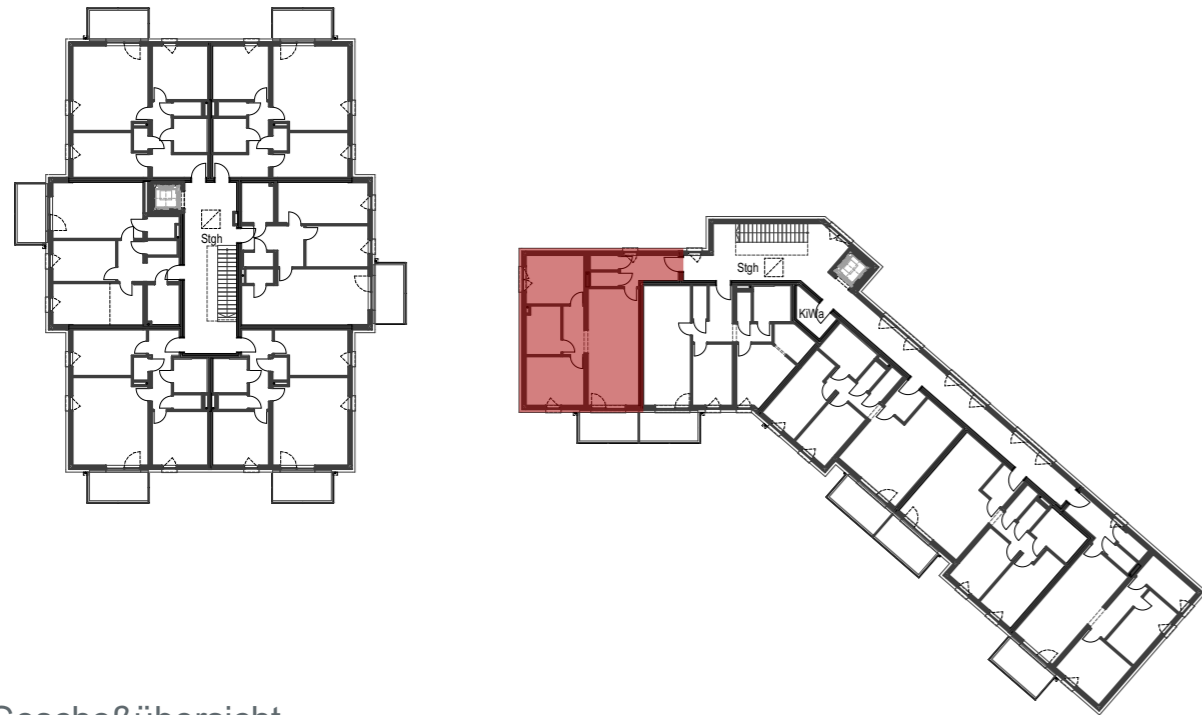
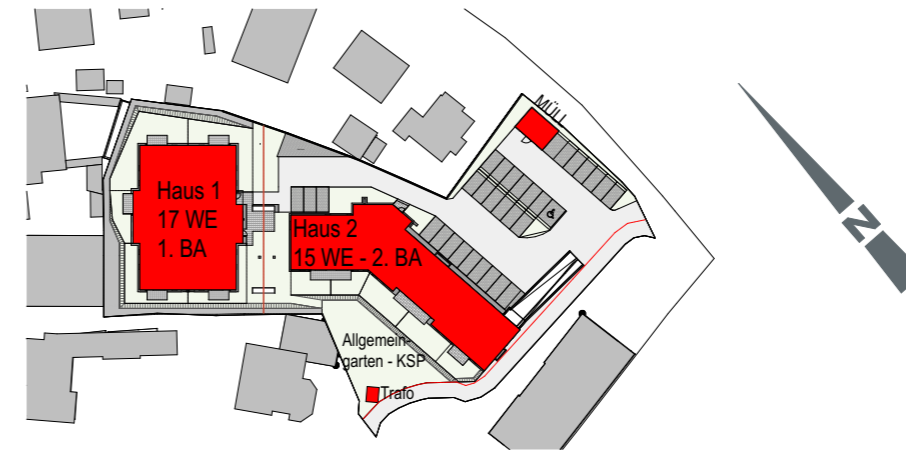


# Neubau Wohnanlage Attnang-Puchheim

2. Bauabschnitt - Rudolfsweg 1, 4800 Attnang-Puchheim



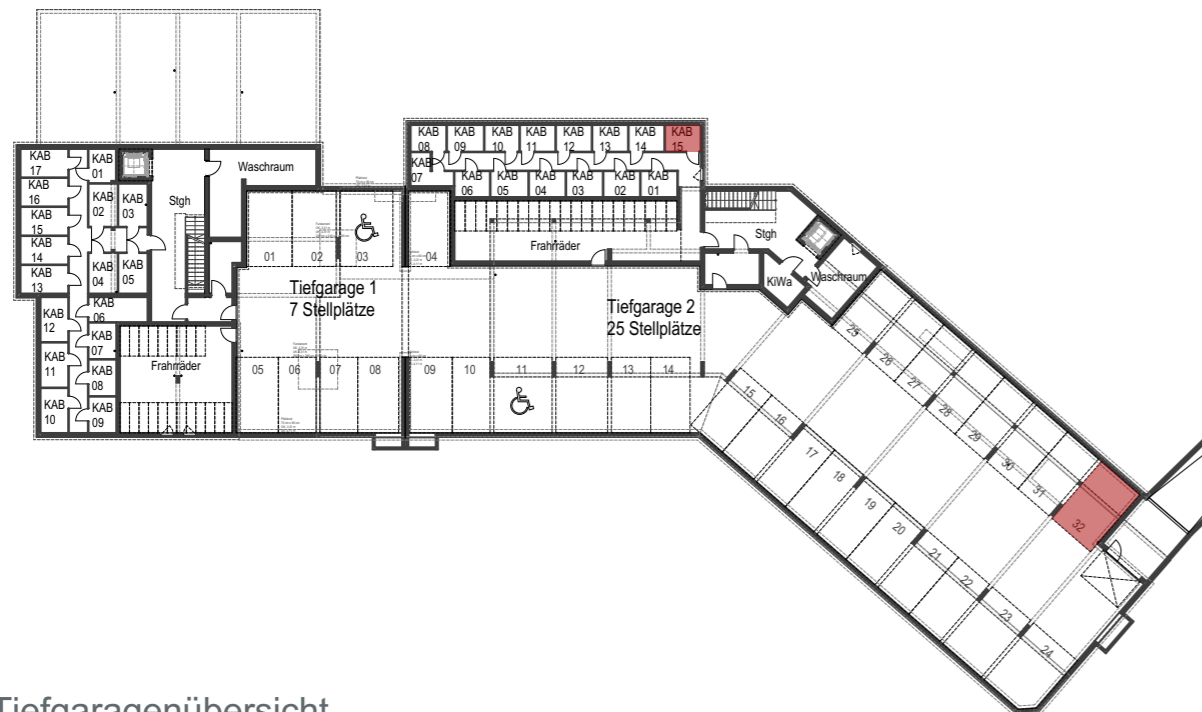
Geschoßübersicht



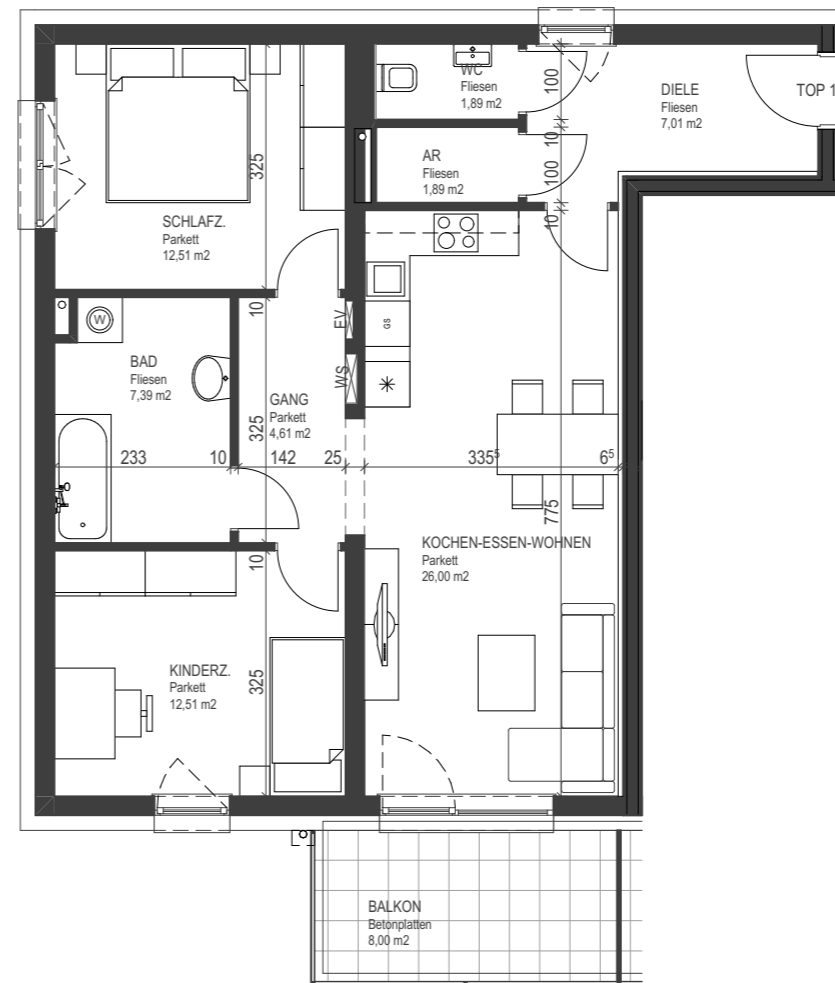
TOP 15

Haus 2 - 3 Zimmer

2. Obergeschoß



Tiefgaragenübersicht



TOP 15 - 3 Zi	Haus 2
Wohnräume	73,81 m <sup>2</sup>
	<b>73,81 m<sup>2</sup></b>
Balkon	8,00 m <sup>2</sup>
Keller	4,12 m <sup>2</sup>

**B3**  
Architektur

B3 Immobilien GmbH  
Georgstraße 30  
4222 Langenstein  
+43 7237 / 60 60  
office@b3-architektur.at  
www.b3-architektur.at