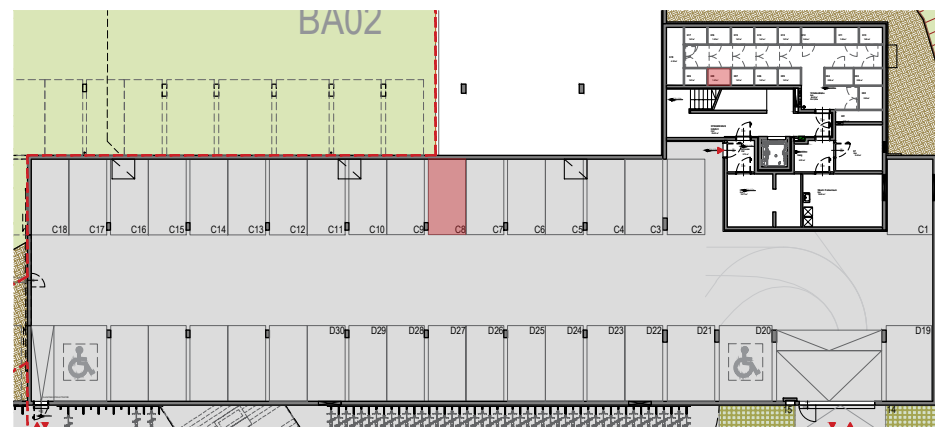
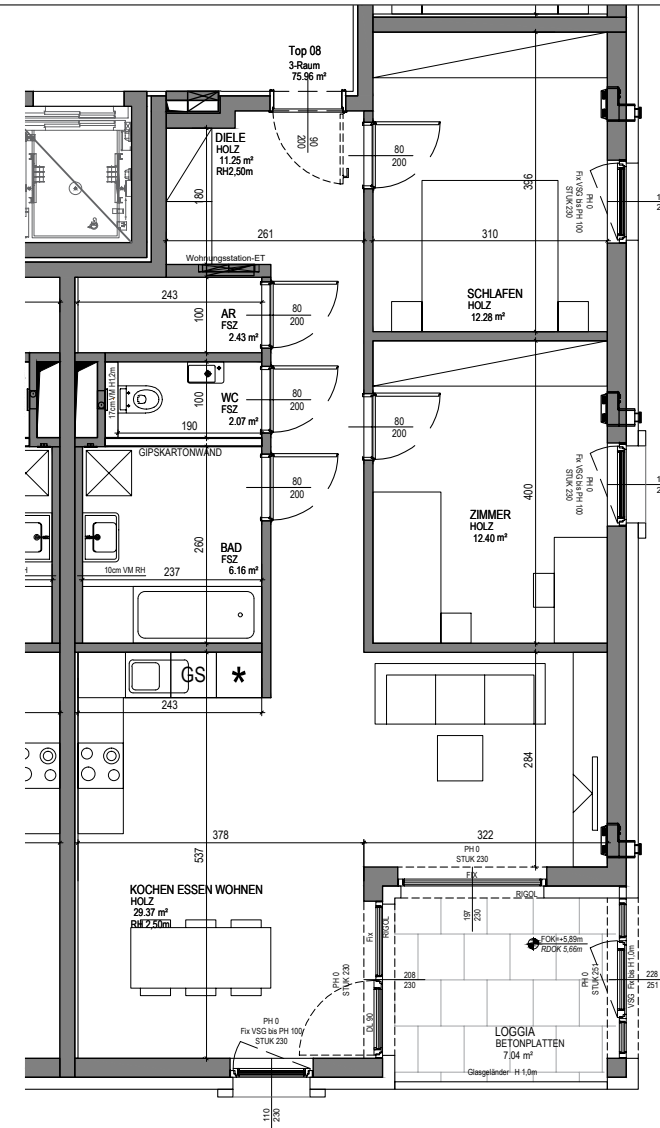
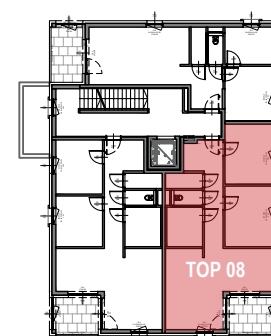




LAGEPLAN M1:1000



UNTERGESCHOSS M1:500



ÜBERSICHT M1:500

TOP 08 | 3-RAUM

Wohnfläche 75,96m²
Loggia 7,04m²
Wohnnutzfläche 83,00m²

Kellerabteil 08 1,67m²
Stellplatz TG Nr. C8