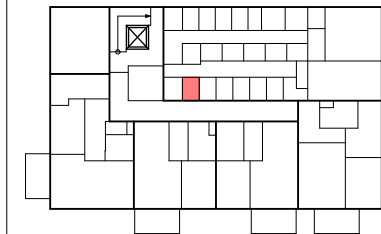
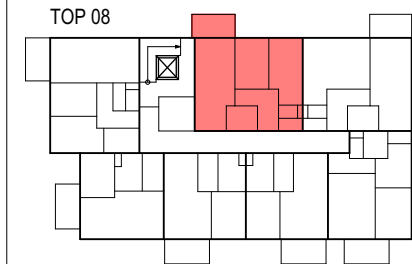


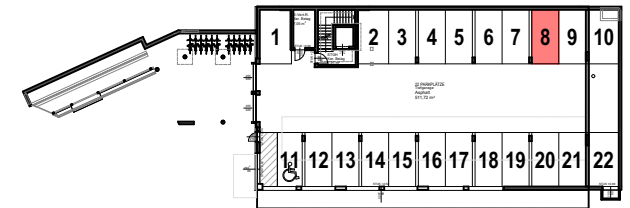
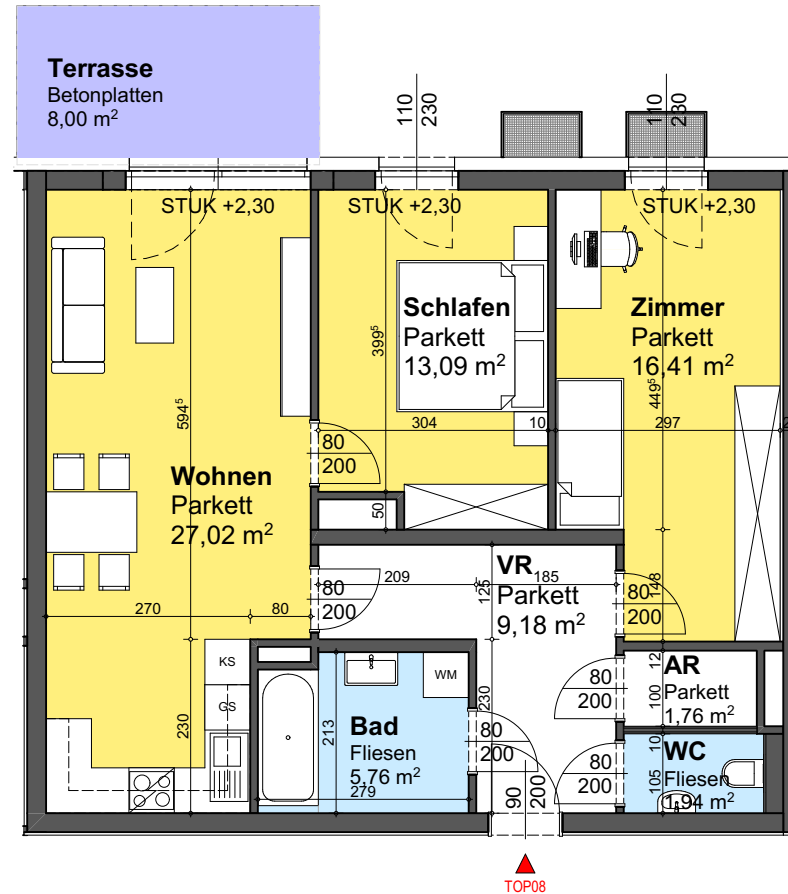
LAGEPLAN



ERDGESCHOSS ÜBERSICHT



1.OBERGESCHOSS ÜBERSICHT



TIEFGARAGE ÜBERSICHT

TOP	08
ZIMMER	3
WOHNFLÄCHE	75,16m ²
LOGGIA	0,00m ²
WOHNNUTZFLÄCHE	75,16m ²

TERRASSE	8,00m ²
GARTEN	0,00m ²
STELLPLATZ NR.	8
KELLERABTEIL	3,00m ²