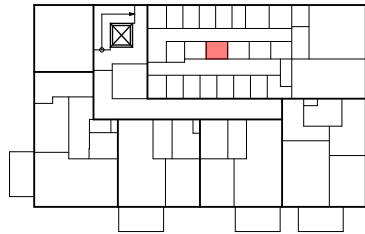
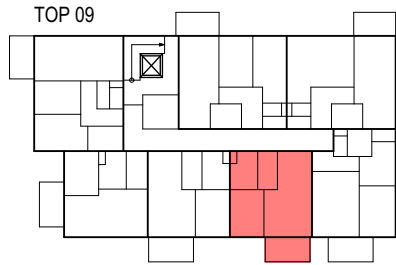


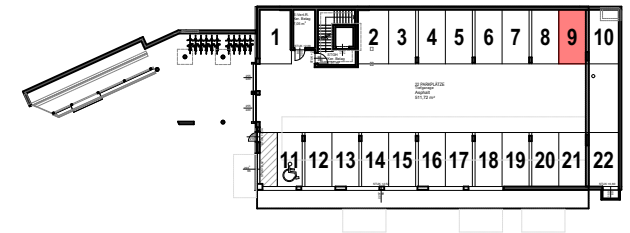
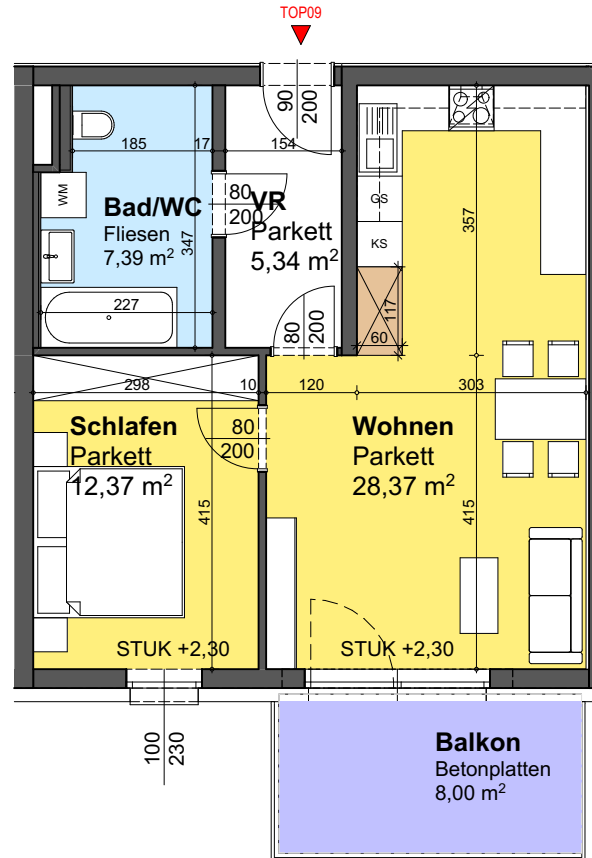
LAGEPLAN



ERDGESCHOSS ÜBERSICHT



1.OBERGESCHOSS ÜBERSICHT



TIEFGARAGE ÜBERSICHT

TOP	09
ZIMMER	2
WOHNFLÄCHE	53,47m ²
LOGGIA	0,00m ²
WOHNNUTZFLÄCHE	53,47m ²

BALKON	8,00m ²
GARTEN	0,00m ²
STELLPLATZ NR.	9
KELLERABTEIL	2,56m ²