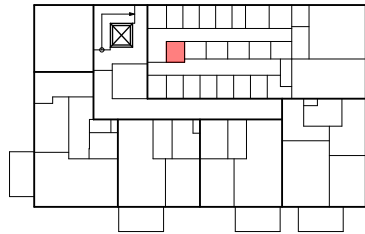
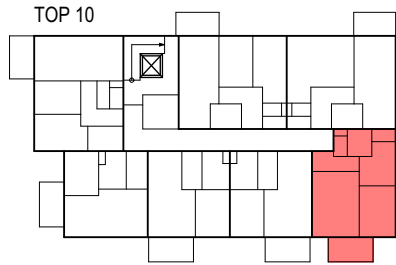


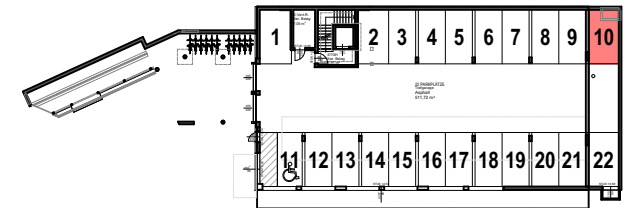
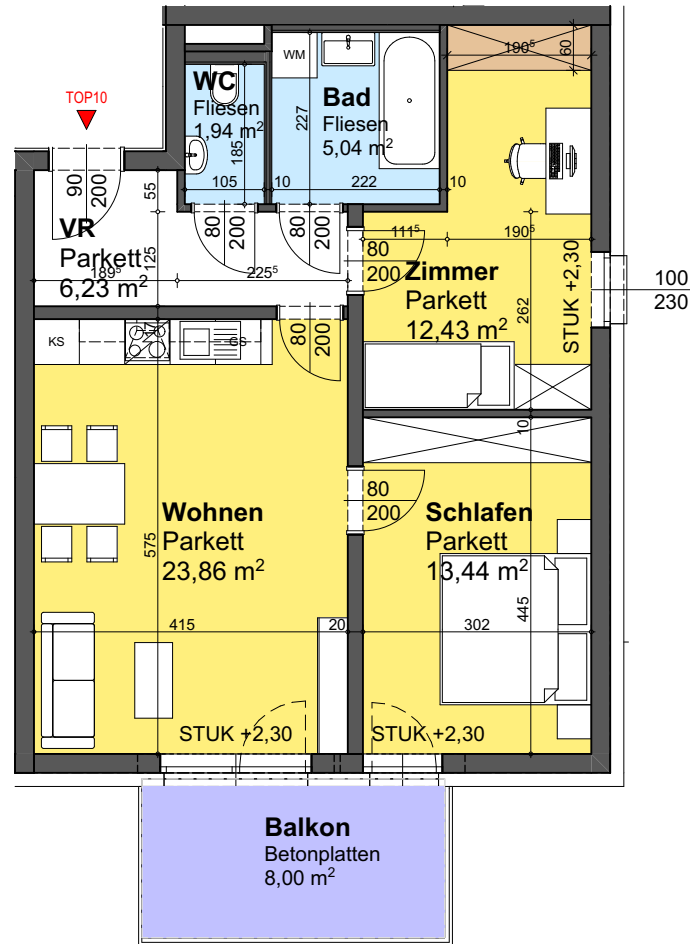
LAGEPLAN



ERDGESCHOSS ÜBERSICHT



1.OBERGESCHOSS ÜBERSICHT



TIEFGARAGE ÜBERSICHT

TOP	10
ZIMMER	3
WOHNFLÄCHE	62,94m ²
LOGGIA	0,00m ²
WOHNNUTZFLÄCHE	62,94m ²

BALKON	8,00m ²
GARTEN	0,00m ²
STELLPLATZ NR.	10
KELLERABTEIL	2,90m ²