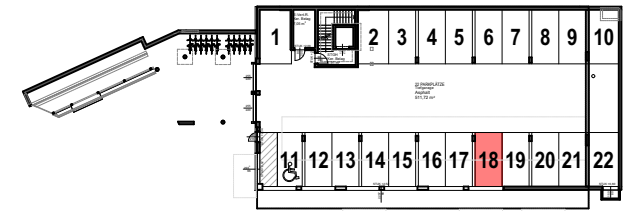
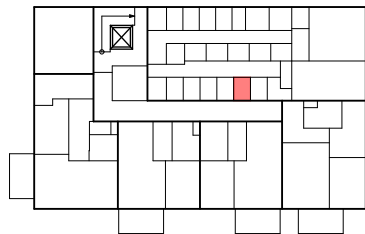


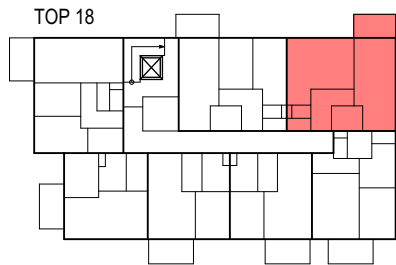
LAGEPLAN



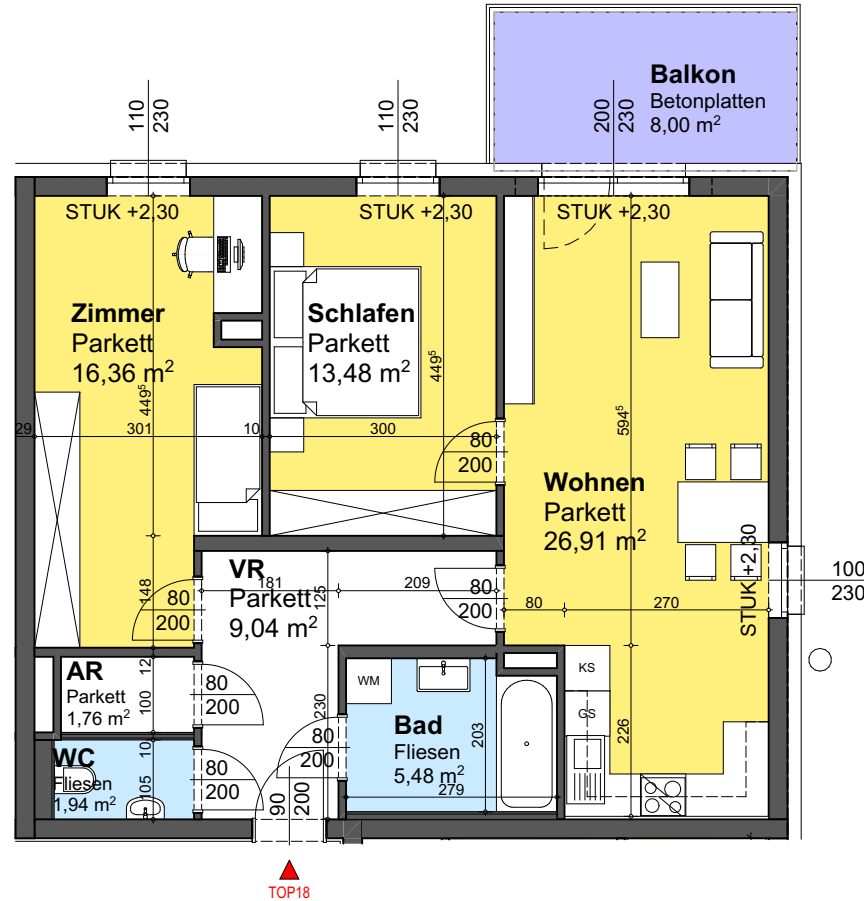
TIEFGARAGE ÜBERSICHT



ERDGESCHOSS ÜBERSICHT



2.OBERGESCHOSS ÜBERSICHT



TOP	18
ZIMMER	3
WOHNFLÄCHE	74,97m ²
LOGGIA	0,00m ²
WOHNNUTZFLÄCHE	74,97m ²

BALKON	8,00m ²
GARTEN	0,00m ²
STELLPLATZ NR.	18
KELLERABTEIL	3,00m ²